



**DURA PRODUCTS**

Technology with Lasting Value

PO Box 380 | 504 Demoss Ave | Arcadia, IN 46030  
(855) 502-3872 | [www.DuraProducts.com](http://www.DuraProducts.com)



**2019**



**DURA PRODUCTS**

Technology with Lasting Value

**MASTER CATALOG**

**2019**



## DURA PRODUCTS

Technology with Lasting Value

Dura Products is an Indiana based manufacturer of state-of-the-art metering, pumping and dispensing systems. All products are manufactured right here in America's heartland and are distributed globally through a wide network of approved distributors. Founded by owners with decades of knowledge in farming and the chemical sales industry, Dura Products prides itself on innovative, versatile and durable designs with the end customer always in mind.



## DURA PRODUCTS

Technology with Lasting Value

PO Box 380 | 504 Demoss Ave | Arcadia, IN 46030  
(855) 502-3872 | [www.DuraProducts.com](http://www.DuraProducts.com)



Visit [www.DuraProducts.com](http://www.DuraProducts.com) for full disclosure of terms and conditions.

**ORDERING:** Call (855) 502-3872, fax (317) 984-7868 or email [CustomerService@DuraProducts.com](mailto:CustomerService@DuraProducts.com). All orders received by 1:00 p.m. Eastern Standard Time will be shipped that day unless the item is on back-order. If the item is on back-order, you will receive a call to discuss whether you want an alternate product or would prefer to wait.

**SHIPPING:** A full pallet (consisting of 25 systems) is delivered via a freight carrier. Incomplete pallets may be delivered via freight carrier, UPS Ground or FedEx Ground depending on which is the most economical for you. Shipping is FOB Arcadia, IN.

**WARRANTY:** All Dura Products equipment is covered by a two-year warranty from the date of manufacture. For warranty consideration, call (855) 502-3872 (DURA) to request a Return Goods Authorization (RGA) form and follow the instructions on the form to ship the item back for a warranty evaluation. Once the evaluation is complete (in approximately three weeks), the item will either: 1. Be repaired or replaced at no cost to you and returned, or 2. You will be contacted to discuss an item that is not covered by the warranty. We offer a fully functional repair department that can repair your non-warranty claim item or we can arrange to properly dispose of the item. DO NOT send hoses, nozzles, clamps and fittings or a \$25 per pump EPA disposal fee will be charged. Triple rinse and drain equipment of all liquids. Make sure equipment is in a sealed waterproof bag before placing into box. *Shipping to the warranty repair center is the responsibility of the customer.*

**MAINTENANCE PROGRAM:** All new equipment manufactured by Dura Products is covered by a maintenance program within 2 years of the date manufactured. Eligible equipment must be shipped between July 1st and December 31st to take advantage of the program.

Call (855) 502-3872 to request a Maintenance Return Goods Authorization (MRGA) number. Form can be found at [www.DuraProducts.com/maintenance-program/](http://www.DuraProducts.com/maintenance-program/).

Complete form ensuring all contact details and return address are correct and sign. Follow the instructions on the form to ship for maintenance.

DO NOT send hoses, nozzles, clamps and fittings or a \$25 per pump EPA disposal fee will be charged. Triple rinse and drain equipment of all liquids. Make sure equipment is in a sealed waterproof bag before placing into box.

Once the evaluation is complete, the customer will be contacted by Dura Products with the results. If the part DOES NOT fall under the warranty period and parameters, it will be replaced and billed to the customer. Customer is responsible for all shipping costs and liability.

Please allow 2-4 weeks for evaluation once the equipment is received.

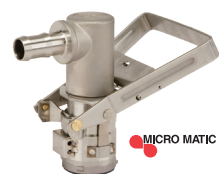
**RETURN POLICY:** If you are not completely satisfied with your purchase for any reason, please contact us. Your satisfaction is our ultimate concern. Authorization is required for any merchandise return. Contact us at (855) 502-3872 or [CustomerService@DuraProducts.com](mailto:CustomerService@DuraProducts.com) for a return authorization number, describe the items being returned and the reason. All returned items must be shipped within fifteen (15) days of receipt. Items must be unused and in original condition including the original packaging, documentation, manuals, and accessories.

ALL ORDERS FILLED CORRECTLY ARE SUBJECT TO A MINIMUM 20% (\$10.00 MINIMUM) HANDLING AND RESTOCKING CHARGE. CUSTOMERS ARE RESPONSIBLE FOR ALL SHIPPING CHARGES, UNLESS THE CAUSE FOR THE RETURN IS DURA PRODUCTS' ERROR. SHIPPING CHARGES MUST BE PREPAID ON ALL RETURN SHIPMENTS. FOR YOUR PROTECTION, WE RECOMMEND YOU INSURE ALL RETURNED PACKAGES. DURA PRODUCTS IS NOT RESPONSIBLE FOR RETURNED SHIPMENTS THAT ARE LOST, PILFERED, OR DAMAGED.

CANCELLATIONS OR REFUSAL OF ORDERS WHICH HAVE ALREADY SHIPPED ARE SUBJECT TO THE MINIMUM 20% (\$10.00 MINIMUM) HANDLING AND RESTOCKING CHARGE. HEAVY OR OVERSIZE ITEMS SHIPPED VIA FREIGHT CARRIER, INCLUDING ALL CHEMICAL TRANSFER SYSTEMS, ARE ALSO SUBJECT TO RETURN FREIGHT CHARGES.

**NON-RETURNABLE PRODUCTS:** CUSTOM MADE, MANUFACTURED TO ORDER, SPECIAL ORDER OR CLEARANCE PRODUCTS CANNOT BE RETURNED FOR CREDIT UNLESS IT IS A DURA PRODUCTS OR VENDOR ERROR.





Stainless Steel RSV / 4 Key  
Dispense Coupler Barbed  
Liquid Outlet  
**DP-R3713** EPDM



POLY RPV / 4 Key  
Dispense Coupler Barbed  
Liquid Outlet  
**DP-R3714** EPDM



Stainless Steel RSV / 4 Key  
Container Valve 2.5" x 5"  
Buttress Thread  
**DP-R4097-E** EPDM



POLY RPV / 4 Key  
Container Valve  
2.5" x 5" Buttress Thread  
**DP-R2682** EPDM



DEF Stainless Auto  
Shut-Off Nozzle  
with Stainless Steel  
Spout and Swivel  
**DP-N4001**



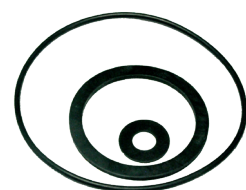
DEF Poly Auto  
Shut-Off Nozzle  
with Stainless Steel  
Spout and Swivel  
**DP-N4005**



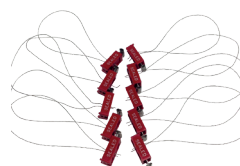
DEF POLY Manual Nozzle  
with Stainless Steel Spout  
and Poly Swivel  
**DP-N4003**



DEF Dura-Meter™  
Face Plate  
**DP-MFP01-D**



DEF Dura-Pump™  
Gasket Kit  
**DP-G4001A-E** EPDM



Tamper Evident Seals  
**DP-P5500** 100 PACK  
**DP-P5501** 10 PACK



DEF Dura-Pump™  
Bottom Housing KIT  
with Bottom Gasket  
and Screws  
**DP-H4001A-E** EPDM



DEF Dura-Pump™  
Cartridge KIT with  
O-Ring and  
Bottom Gasket  
**DP-P4017A-D**



1" NPT Telescoping Downtube  
(also used for Easy Caddy Conversion on 55-Gallon Drum)  
**DP-T4001**



DEF Downtube  
55-Gallon Drum 32"Length **DP-T4810**  
135-Gallon IBC Tote 22"Length **DP-T3810**  
275-Gallon IBC Tote 37.8"Length **DP-T4960**  
330-Gallon IBC Tote 45"Length **DP-T4135**



135-Gallon Tank  
**DP-AG135**

# DURA-ABS™ AUTO-BATCH SYSTEM

#1 Market Share Leader  
in agricultural transfer systems.

"We use them for a **tender**. It allows my guys  
to load multiple **products** and work **faster**."  
-Southern FS

"The system **reduces** human error and  
creates valuable **efficiency** for us."  
-Peterson Farms, KY

"I've got six plumbed to an **inductor**.  
It **works** great, and **saves** me  
time when **mixing** batches."  
-Don, Nutrien Ag Solutions

"Instinct® System  
**RECOMMENDED PUMP**"  
-Corteva Agriscience

"After a long season of **spraying**, we  
found that our herbicide tracking was **more**  
**accurate** by using the Auto-Batch  
System from Dura Products."  
-Wright Tree Service



PREMIUM  
**HIGH-FLOW**  
AG CHEMICAL  
**TRANSFER SYSTEMS**

UP TO  
**15GPM**





The industry's **only**  
transfer system offering  
an **automated**  
dispensing option



### DURA-ABS™ AUTO-BATCH SYSTEM

- / Intuitive interface allows for the selection of manual or automatic operation with the flip of a switch
- / High-flow pump with up to 15GPM/56LPM flow rate
- / Optimized for repeatable batching; returns to the last volume amount dispensed
- / 100% moisture-sealed circuitry
- / Includes Dura-Meter™ with impact resistant Lexan™ faceplate
- / Available in 12 Volt or 110 Volt, and EPDM, Viton® or Silicone options
- / Includes a 2-year Warranty & Maintenance Program
- / Measures in gallons, liters and ounces



DPABS-4312 12 Volt    DPABS-4315 110 Volt

(Available in EPDM, Viton®, or Silicone)

Must specify EPDM (**product # and E**),  
Viton® (**product # and V**), or  
Silicone (**product # and S**) when ordering.

Always turn pump off and disconnect  
system from power when not in use.



## HOW IT WORKS

- 1 Select the volume desired
- 2 Press START
- 3 The pump will begin to dispense fluid then automatically shut off when complete



### DEF DURA-PUMP™

- / High-Flow pump with up to 15GPM/56LPM free flow rate and 10+GPM/40+LPM with 3/4" discharge hose and nozzle
- / Self-priming diaphragm pump with internal bypass
- / Motor thermally protected from overheating
- / 30-minute duty cycle
- / Suction port has 2" Male NPT and 1" Female NPT
- / Pump is easily field serviceable
- / 10-minute auto-shut off motor (available in 110V only)
- / Includes a 2-year Warranty & Maintenance Program

DEF-2012E 12 Volt    DEF-2015E 110 Volt

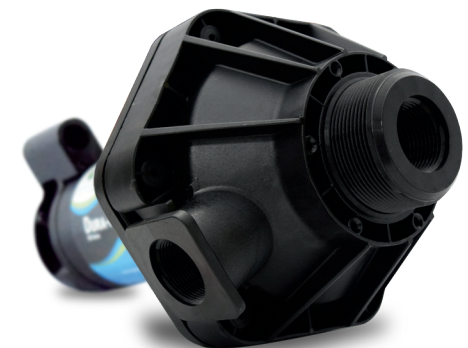
### DEF DURA-METER™

- / Made of impact resistant Lexan™ faceplate
- / 100% moisture-sealed circuitry
- / Same great menu driven backlit display
- / Plumbed for both in-line and 90 degree applications
- / Includes a 2-year Warranty & Maintenance Program

DP-3000D

#### Specifications

Operating Temp	-10°F to 130°F, -23°C to 54°C
Flow Rate	2 to 22GPM, 4 to 44LPM
ISO22241-3 Compliant	Yes
Meter Accuracy	+ / - .5%
Maximum Pressure	40 PSI
Wetted Materials	Polypropylene; 304 Stainless Steel; Ryton; EPDM seals



#### Specifications

Check Valve	Internal; EPA 165.45 compliant
Vertical Suction Lift	Self-priming to 10ft, 3m
Power Cord	12 Volt: 20ft, 6m; 110 Volt: 6.5ft, 2m
Motor	1/4 HP, 186W
Amps	12 Volt: 18.5; 110 Volt: 2.0
Suction Port	2" Male and 1" Female NPT thread
Discharge Port	1" Female NPT thread
ISO22241-3 Compliant	Yes
Wetted Materials	Polypropylene; Santoprene; 304 Stainless Steel; EPDM seals





# DEF DURA-PUMP™ 135 PORTABLE TOTE



# ALL-IN-1

## COMPLETE SYSTEM to TRANSPORT, DISPENSE & STORE DIESEL EXHAUST FLUID

Pumping System Contains	
135-Gallon Tote	Specially designed to maintain the strictest purity of DEF
Pump System	ISO/EPA compliant DEF Easy Caddy pumping system
Coupler	RPV; MicroMatic
Discharge Hose	3/4" x 20ft, 6m
Suction Hose	3/4" x 1.5ft, 0.5m
Lid	6"; Vented
Nozzle	Manual or Automatic
Meter	DEF Dura-Meter™ (optional)
Other	All hose clamps and fittings

/ Includes a 2-year Warranty & Maintenance Program

MANUAL Nozzle	AUTOMATIC Nozzle
DEFE-2512ME-135 12 Volt	DEFE-2512AE-135 12 Volt
DEFE-2515ME-135 110 Volt	DEFE-2515AE-135 110 Volt

DEF Dura-Meter™ DP-3000D (sold separately)

Tote, Lid and Container Valve INCLUDED.



# LIMITLESS APPLICATIONS

Use **individual units** for **simple** applications

Use **multiple units** to create an **automated process** for dispensing into an inductor cone







## DURA-METER™

- / Made of impact resistant Lexan™ faceplate
- / 100% moisture-sealed circuitry
- / Menu driven backlit display
- / Plumbed both for in-line and 90-degree applications
- / Includes a 2-year Warranty & Maintenance Program

DP-3000E EPDM    DP-3000V Viton®    DP-3000S Silicone

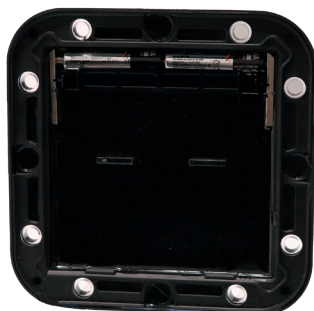
Must specify EPDM (product # and E), Viton® (product # and V), or Silicone (product # and S) when ordering.

Specifications	
Operating Temp	-10°F to 130°F, -23°C to 54°C
Flow Rate	2 to 22GPM, 7.5 to 83LPM
Meter Accuracy	+ / - .5%
Backlit Display	Yes
Maximum Pressure	40 PSI
Wetted Materials	Polypropylene; 304 Stainless Steel; Ryton; EPDM, Viton® or Silicone seals

## Special Features

- / Extended battery life with use of 4 "AAA" batteries
- / Faceplate over-molded with Santoprene and filled with gel for improved shock resistance

Customer should always check calibration before use



## DEF DURA-PUMP™ TOP UNLOAD

Pumping System Contains	
10+GPM Pump	High-Flow Dura-Pump™
Downtube	1" Telescoping
Nozzle	Manual or Automatic
Discharge Hose	3/4" x 20ft, 6m
Meter	DEF Dura-Meter™ (optional)
Other	All hose clamps and fittings

/ Includes a 2-year Warranty & Maintenance Program



MANUAL Nozzle	AUTOMATIC Nozzle
DEFT-2012ME 12 Volt	DEFT-2012AE 12 Volt
DEFT-2015ME 110 Volt	DEFT-2015AE 110 Volt

DEF Dura-Meter™ DP-3000D (sold separately)  
Meter, Totes, Drums and Lid sold separately.

## DEF DURA-PUMP™ EASY CADDY TOP SUCTION

For totes with RPV type valve

TOP MOUNT  
Easy Caddy secured on top of a 330 tote

Pumping System Contains	
10+GPM Pump	High-Flow Dura-Pump™
Coupler	RPV; MicroMatic
Discharge Hose	3/4" x 20ft, 6m
Suction Hose	3/4" x 1.5ft, 0.5m
Nozzle	Manual or Automatic
Meter	DEF Dura-Meter™ (optional)
Other	All hose clamps and fittings

/ Includes a 2-year Warranty & Maintenance Program



MANUAL Nozzle	AUTOMATIC Nozzle
DEFE-2512ME 12 Volt	DEFE-2512AE 12 Volt
DEFE-2515ME 110 Volt	DEFE-2515AE 110 Volt

DEF Dura-Meter™ DP-3000D (sold separately)

Meter, Totes, Drums, Lid and Container Valves sold separately.





# DURA PRODUCTS AG CHEMICAL CHART

COMPOUND	EPDM	Viton®	Silicone
2,4-D Ester		●	
Accord / Accord XRT II	●	●	●
Ammonium Sulfate	●	●	●
Atrazine	●	●	
Balance Flexx	●	●	
Callisto® 480SC	●		
Capreno	●	●	
Corvus	●	●	
Degree Xtra®	●	●	
Dicamba / Xtendimax	●		
DiFlexx Duo	●	●	
Duramax / Durango	●	●	●
Engenia	●		
Enlist Duo	●	●	●
EverGol	●	●	
Foliars		●	
ForeFront	●		
FulTime® NXT		●	
Fungicides		●	
Garlon 3A	●		●
Gaicho 600	●	●	
Gramoxone / Paraquat		●	
Grazon P+D / GrazonNext	●		
Halex® GT	●		
Huskie		●	
Instinct®			●
Intimidator	●		●
Keystone / Keystone LA			●

COMPOUND	EPDM	Viton®	Silicone
Laudis	●	●	
Lexar® EZ	●		
Liberty		●	
Lorsban 4E / Lorsban Advanced		●	
Lumax® EZ	●		
Matador	●		●
Max-In® Ultra ZMB	●	●	
MSO / Crop Oil / Oil Based		●	
Nitrogen based		●	
N-Serve 24		●	
Parity		●	
Prosaro	●	●	
Prowl / Pendimethalin		●	
RAXILPro	●	●	
Rely 280	●	●	
Resicore			●
Roundup®	●	●	
Shredder™ E-99		●	
Stratego / Stratego YLD	●		
Stylet-Oil		●	
SureStart® / SureStart II			●
Surpass EC	●		●
Tacoma		●	
TopNotch	●		
Tordon 22k	●		
Verdict	●		●
Warrant		●	
Wolverine Advanced		●	

The Dura Products Chemical Compatibility Chart **should be considered as a guide only** due to the many variables which may affect the compatibility of materials. This guide is based on the most recent information obtained from a variety of suppliers and chemical producers and is believed to be accurate. Actual decisions on materials used need to be tested and evaluated by the customer for each specific application. The responsibility of proper chemical compatibility of equipment and material used is the full responsibility of the customer. Dura Products does not warrant product damaged by non compatibility.

For help with the proper selection of pump for your application needs, please call (855) 502-3872.



## DURA-PUMP™

- / High-Flow with up to 15GPM/56LPM flow rate
- / Self-priming diaphragm pump with internal by-pass
- / Motor thermally protected from overheating
- / 30-minute duty cycle
- / Suction port has 2" Male NPT and 1" Female NPT
- / Pump is easily field serviceable
- / Includes a 2-year Warranty & Maintenance Program

DP-4012 12 Volt | DP-4015 110 Volt

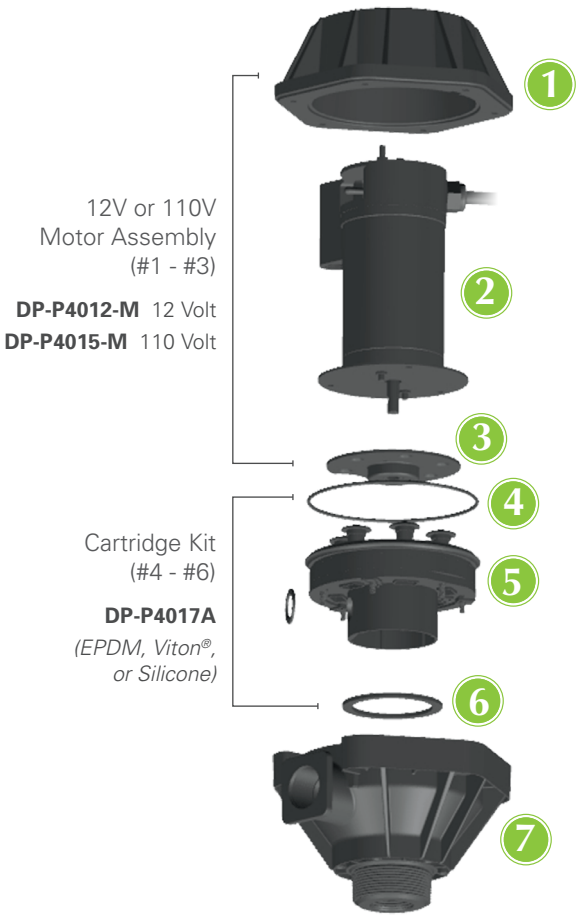
(Available in EPDM, Viton®, or Silicone)

Must specify EPDM (product # and E),  
Viton® (product # and V), or  
Silicone (product # and S) when ordering.

Always turn pump off and disconnect  
system from power when not in use.

### Specifications

Check Valve	Internal; EPA 165.45 compliant
Vertical Suction Lift	Self-priming to 10ft, 3m
Power Cord	12 Volt: 20ft, 6m; 110 Volt: 6.5ft, 2m
Motor	1/4 HP, 186W
Amps	12 Volt: 18.5; 110 Volt: 2.0
Suction Port	2" Male and 1" Female NPT thread
Discharge Port	1" Female NPT thread
Wetted Materials	Polypropylene; Santoprene; EPDM, Viton® or Silicone seals; 304 Stainless Steel



12V or 110V  
Motor Assembly  
(#1 - #3)  
**DP-P4012-M** 12 Volt  
**DP-P4015-M** 110 Volt

Cartridge Kit  
(#4 - #6)  
**DP-P4017A**  
(EPDM, Viton®,  
or Silicone)

- 1 Upper Housing  
**DP-P4002A**
- 2 12V or 110V Motor
- 3 Drive Plate **DP-P4013A**
- 4 O-ring  
**DP-P4004AO** (EPDM, Viton® or Silicone)
- 5 Cartridge  
**DP-P4017A** (EPDM, Viton® or Silicone)
- 6 Bottom Gasket  
**DP-P4001AG** (EPDM, Viton® or Silicone)
- 7 Bottom Housing  
**DP-H4001A** (EPDM, Viton® or Silicone)





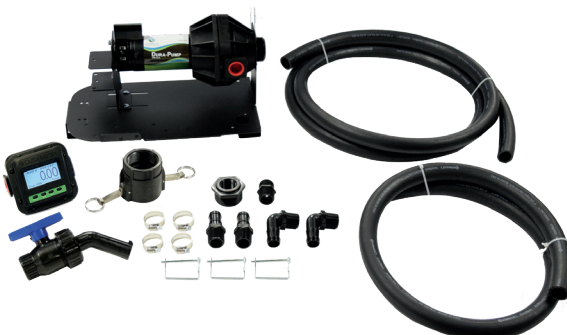
# DURA-PUMP™ EASY CADDY

1



**SIDE MOUNT**  
Easy Caddy secured  
on side of tote

The Easy Caddy system is our **top selling** and the industry's **most versatile** chemical transfer system



Pumping System Contains	
Pump	High-Flow Dura-Pump™
Suction Hose	1" x 5ft, 1.5m
Discharge Hose	1" x 12ft, 3.6m
Nozzle	Ball valve
Camlock	2"
Meter	Dura-Meter™ (optional)
Other	All hose clamps, barbs and nipples

C

## DURA-Z™ Z-SPRAY OR STEEL GREEN ACCESSORY KIT

Fits: **Z SPRAY™**  
INTERMEDIATE | Z-MAX



- Kit contains:
- / 2 x Full port valves
  - / 2 x Float valves
  - / Stainless steel mounts
  - / Drip free connector (male & female)
  - / 3/4" x 9ft chemical hose
  - / All required plumbing parts
  - / All required hardware

**DP-AK-ZSPRAY** | **DP-AK-STEELG**



D

## DURA-PG™ PERMAGREEN ACCESSORY KIT

Fits: **permagreen™**  
TRIUMPH

- Kit contains:
- / 2 x Float valves
  - / Stainless steel mount
  - / Drip free connector (male & female)
  - / 3/4" x 7ft chemical hose
  - / All required plumbing parts
  - / All required hardware

**DP-AK-PERMA**



E

## DURA RECOMMENDED STRAINER

A 1" Y-Strainer with a 40-mesh screen on the suction or inlet side of the pump keeps foreign material out of the system and out of your sprayer.

/ BANJO 1" Y-STRAINER

**DP-S10040M**





# DURA-PROfil™ SPRAYER CLOSED-FILL SYSTEM

REQUIRES **A** OR **B**, ACCOMPANIED BY **C** OR **D**, WITH RECOMMENDED **E**

## A DURA-PUMP™ EASY CADDY

High flow Dura-Pump™ pumping system provides multiple mounting capabilities.

Pumping system contains:

- / 1" x 12ft EPDM discharge hose
- / 1" x 5ft EPDM suction hose
- / 2" Camlock with hose barbs and clamps
- / Ball valve nozzle
- / Dura-Meter™ (optional)



### WITHOUT Meter

DPE-4012V 12 Volt	DPE-4015V 110 Volt
-------------------	--------------------

Manufactured with Viton® seals

## B DURA-PUMP™ STAKE POCKET SYSTEM

High flow Dura-Pump™ pumping system securely mounts into the stake pocket of any pickup truck bed.

Pumping system contains:

- / 1" x 12ft EPDM discharge hose
- / 1" x 5ft EPDM suction hose
- / 2" Camlock with hose barbs and clamps
- / Ball valve nozzle
- / Dura-Meter™ (optional)



### WITHOUT Meter

DPSP-4012V 12 Volt
--------------------

Manufactured with Viton® seals

# SYSTEM



**TOP MOUNT**  
Easy Caddy secured  
on top of tote



**GROUND**  
Easy Caddy used  
from the ground

# USE IT

- / The Easy Caddy can be mounted in six different configurations on a variety of tank/tote and drum types
- / Use it mounted on top of a tank or on top of a 30/55-Gallon Drum, on the side of tank, or off the ground depending on user preference
- / Conversion kits are available to mount a system on Monsanto or Snyder type tanks (see pg. 13)
- / Includes a 2-year Warranty & Maintenance Program

WITH Meter	WITHOUT Meter
DPEM-4312 12 Volt	DPE-4012 12 Volt
DPEM-4315 110 Volt	DPE-4015 110 Volt

(Available in EPDM, Viton® or Silicone)

Must specify EPDM (product # and E), Viton® (product # and V), or Silicone (product # and S) when ordering.

Always turn pump off and disconnect from power when not in use.

Tanks, Totes and Drums sold separately.



**DRUM**  
Easily converted to a  
30/55-Gallon Drum



**SNYDER TANK**  
Easily converted to  
a GEM Cap



**MONSANTO TANK**  
Easily converted to a MTS

# 6 WAYS



# DURA-PUMP™ EASY CADDY CONVERSION KITS

For Use On **MONSANTO TANK**  
MTS Easy Caddy Conversion Kit **DP-AK0008**

1

Begin with the Dura Easy Caddy

2

Remove Dura-Pump™ from Easy Caddy frame

3

Add MTS Kit DP-AK0008 (found on page 13)

Dura MTS Kit DP-AK0008 installed on Monsanto tank

For Use On **SNYDER TANK**  
GEM Cap Easy Caddy Conversion Kit **DP-AK0009**

1

Begin with the Dura Easy Caddy

2

Remove Dura-Pump™ from Easy Caddy frame

3

Add GEM Cap Kit DP-AK0009 (found on page 13)

Dura GEM Cap Kit DP-AK0009 installed on Snyder tank

For Recirculation On **IBC/TOTE**  
Recirculation Kit **DP-AK0007**

1

Begin with the Dura Easy Caddy

2

Add Recirculation Kit DP-AK0007

Dura Recirculation Kit DP-AK0007 installed on IBC/TOTE (found on page 13)

For Use On **30/55-GALLON DRUM**  
1" NPT Telescoping Downtube **DP-T4001**

1

Begin with the Dura Easy Caddy

2

Remove Dura-Pump™ from Easy Caddy frame

3

Add DP-T4001 1" NPT Telescoping Downtube (found on page 13)

DP-T4001 1" NPT Telescoping Downtube installed on 30/55-Gallon Drum

## PROTECTION



- / A singular fill point with a closed system connection yields drip-free transfer of a product.
- / Float valves ensure tanks fill completely and will not overflow.
- / The applicator and environment are protected from off-target chemical exposure.

## PRODUCTIVITY



- / A high flow Dura-Pump™ and singular fill point provides faster fill times and efficiencies.
- / Quickly connect the Dry Poppet, then flip the pump's switch.
- / The sprayer is filled up to 15GPM, while the applicator can multi-task without concern of environmental or personal herbicide exposure.

## PROFICIENT



- / The system is designed to easily recirculate product in the supply tank.
- / Recirculation ensures optimal mixture for the best application.

## PROFESSIONAL



- / A closed-fill system is the hallmark of good stewardship, compliance and the epitome of professionalism.
- / Responsible business practices and a professional image pay dividends through customer retention and referrals.



# DURA-PROfill™

Turf sprayer **Closed-Fill** system  
Designed for the **PRO**

BE A PRO...use a  
Dura-PROfill™



# DURA-PUMP™ SPECIALTY SYSTEMS

Tanks, Totes and Drums sold separately. Always turn pump off and disconnect from power when not in use.



## DURA-PUMP™ QUICK CADDY

- / Our premium highly portable system with built-in carry handle and rugged frame
- / For use in multiple mounting applications both on top of tote and ground adaptable
- / Includes a 2-year Warranty & Maintenance Program

WITH Meter	WITHOUT Meter
DPQM-4312 12 Volt	DPQ-4012 12 Volt
DPQM-4315 110 Volt	DPQ-4015 110 Volt

(Available in EPDM or Viton®)

Must specify EPDM (product # and E) or Viton® (product # and V) when ordering.



Pumping System Contains	
Pump	High-Flow Dura-Pump™
Suction Hose	1" x 5ft, 1.5m
Discharge Hose	1" x 12ft, 3.6m
Nozzle	Ball valve
Camlock	2"
Meter	Dura-Meter™ (optional)
Other	All hose clamps, barbs and nipples



## DURA-PUMP™ TOP UNLOAD

- / Top mount application with 2" NPT bung, 1" telescoping downtube to accommodate varying tank heights
- / Includes a 2-year Warranty & Maintenance Program

WITH Meter	WITHOUT Meter
DPTM-4312 12 Volt	DPT-4012 12 Volt
DPTM-4315 110 Volt	DPT-4015 110 Volt

(Available in EPDM or Viton®)

Must specify EPDM (product # and E) or Viton® (product # and V) when ordering.



Pumping System Contains	
Pump	High-Flow Dura-Pump™
Discharge Hose	1" x 12ft, 3.6m
Downtube	1" Telescoping
Nozzle	Ball valve
Meter	Dura-Meter™ (optional)
Other	All hose clamps, barbs and nipples



## DURA-PUMP™ BOTTOM UNLOAD

- / Configured to mount at bottom of tank/tote
- / Includes a 2-year Warranty & Maintenance Program

WITH Meter	WITHOUT Meter
DPBM-4312 12 Volt	DPB-4012 12 Volt
DPBM-4315 110 Volt	DPB-4015 110 Volt

(Available in EPDM or Viton®)

Must specify EPDM (product # and E) or Viton® (product # and V) when ordering.



Pumping System Contains	
Pump	High-Flow Dura-Pump™
Discharge Hose	1" x 12ft, 3.6m
Camlock	2"; direct attach to tote
Motor Bracket	Yes, rear
Nozzle	Ball valve
Meter	Dura-Meter™ (optional)
Other	All hose clamps, barbs and nipples





# DURA-PUMP™ SPECIALTY SYSTEMS

Tanks, Totes and Drums sold separately. Always turn pump off and disconnect from power when not in use.

## MONSANTO TANK



For use with Monsanto tanks



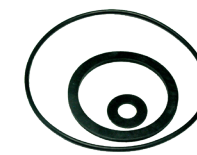
WITH Meter	WITHOUT Meter
<b>DPMTSM-4312</b> 12 Volt	<b>DPMTS-4012</b> 12 Volt
<b>DPMTSM-4315</b> 110 Volt	<b>DPMTS-4015</b> 110 Volt

(Available in EPDM or Viton®)

Must specify EPDM (**product # and E**) or Viton® (**product # and V**) when ordering.

Pumping System Contains	
Pump	High-Flow Dura-Pump™
Discharge Hose	1" x 12ft, 3.6m
Camlock	MTS; direct attach to tote
Motor Bracket	Yes, rear
Nozzle	Ball valve
Meter	Dura-Meter™ (optional)
Other	All hose clamps, barbs and nipples

/ Includes a 2-year Warranty & Maintenance Program



AG Dura-Pump™ Gasket Kit

**DP-G4001A-E** EPDM  
**DP-G4001A-V** Viton®  
**DP-G4001A-S** Silicone



AG Dura-Pump™ Bottom Housing Kit with Bottom Gasket and Screws

**DP-H4001A-E** EPDM  
**DP-H4001A-V** Viton®  
**DP-H4001A-S** Silicone



AG Dura-Pump™ Cartridge KIT with O-Ring and Bottom Gasket

**DP-P4017A-E** EPDM  
**DP-P4017A-V** Viton®  
**DP-P4017A-S** Silicone



AG Dura-Meter™ Chemical Face Plate

**DP-MFP01**



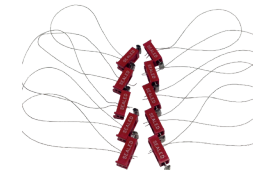
AG Dura-Meter™ Body  
**DP-PMB3000E** EPDM  
**DP-PMB3000V** Viton®  
**DP-PMB3000S** Silicone



RSV / 3 Key Dispense Coupler, Viton Seals  
**DP-R4003**



Female Coupling Dry Poppet for N-Serve Systems  
**DP-C4010N**



Tamper Evident Seals  
**DP-P5500** 100 PACK  
**DP-P5501** 10 PACK



1" Ball Valve Nozzle  
**DP-NF4002**

## SNYDER / GEM CAP TANK



For use with Snyder tanks with large 8" lid



WITH Meter	WITHOUT Meter
<b>DPGEMM-4312</b> 12 Volt	<b>DPGEM-4012</b> 12 Volt
<b>DPGEMM-4315</b> 110 Volt	<b>DPGEM-4015</b> 110 Volt

(Available in EPDM or Viton®)

Must specify EPDM (**product # and E**) or Viton® (**product # and V**) when ordering.

Pumping System Contains	
Pump	High-Flow Dura-Pump™
Discharge Hose	1" x 12ft, 3.6m
GEM Cap Lid	Spin collar; all plumbing assembled on pump
Motor Bracket	Yes; rear
Downtube	1" Telescoping
Nozzle	Ball valve
Meter	Dura-Meter™ (optional)
Other	All hose clamps, barbs and nipples

/ Includes a 2-year Warranty & Maintenance Program



WITH Meter	WITHOUT Meter
<b>DPEM-4612NV</b> 12 Volt	<b>DPE-4612NV</b> 12 Volt
<b>DPEM-4615NV</b> 110 Volt	<b>DPE-4615NV</b> 110 Volt

Easy Caddy pumping system in Viton®

## N-SERVE EASY CADDY

Pumping System Contains	
Pump	High-Flow Dura-Pump™
Discharge Hose	1" x 12ft, 3.6m; Premium XPLE
Suction Hose	1" x 5ft, 1.5m; Premium XPLE
Dry-Poppet Coupler	Available; sold separately (see right)
Nozzle	Ball valve
Meter	Dura-Meter™ (optional)
Other	All hose clamps, barbs and nipples

/ Includes a 2-year Warranty & Maintenance Program



Female Coupling Dry Poppet DP-C4010N sold separately



5-Gallon Calibration Jug  
**DP-J4001**



2" Camlock  
**DP-NF20CL**



MTS Camlock  
**DP-M4001**



WITH Meter	WITHOUT Meter
<b>DPBM-4312NV</b> 12 Volt	<b>DPB-4012NV</b> 12 Volt
<b>DPBM-4315NV</b> 110 Volt	<b>DPB-4015NV</b> 110 Volt

Bottom Unload pumping system in Viton®

## N-SERVE BOTTOM UNLOAD

Pumping System Contains	
Pump	High-Flow Dura-Pump™
Discharge Hose	1" x 12ft, 3.6m; Premium XPLE
Motor Bracket	Yes; rear
Dry-Poppet Coupler	Available; sold separately (see right)
Nozzle	Ball valve
Meter	Dura-Meter™ (optional)
Other	All hose clamps, barbs and nipples

/ Includes a 2-year Warranty & Maintenance Program



Female Coupling Dry Poppet DP-C4010N sold separately



Recirculation Kit for Easy Caddy and Quick Caddy  
**DP-AK0007**



MTS Easy Caddy Conversion Kit  
**DP-AK0008**



GEM Cap Easy Caddy Conversion Kit  
**DP-AK0009**



135-Gallon Tank  
**DP-AG135**



1" NPT Telescoping Downtube (also used for Easy Caddy Conversion on 30/55-Gallon Drum)  
**DP-T4001**