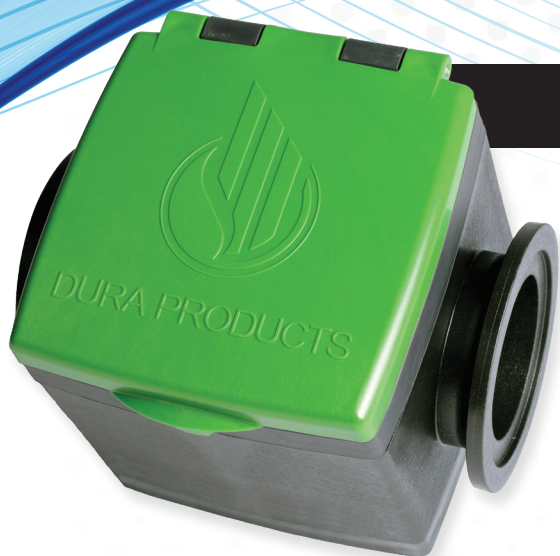


# DURA PRODUCTS

## INTRODUCING OUR NEW 2" HIGH-FLOW DURA-METER™



- / Intuitive menu-driven backlit display
- / Impact resistant Lexan™ faceplate
- / 100% Moisture-sealed circuitry
- / Multiple plumbing options
- / Includes a 2-year Warranty & Maintenance Program



Moisture sealed circuitry.



SPECIFICATIONS		
<b>Nominal Size</b>	2"	3"
<b>Connection</b>	M220 Flange	M300 Flange
<b>Model</b>	Dura HFM 2	Dura HFM 3
<b>Batteries</b>	(2) 9 Volt	(2) 9 Volt
<b>Accuracy</b>	+ / - 0.5%	+ / - 0.5%
<b>Backlit Display</b>	Yes	Yes
<b>GPM</b>	15 - 300	15 - 700
<b>Maximum Pressure</b>	150 PSI	150 PSI
<b>Wetted Materials</b>	GF Polypropylene, Viton®, EPDM or Silicone seal, Sapphire	GF Polypropylene, Viton®, EPDM or Silicone seal, Sapphire

ORDERING INFORMATION			
<b>2"</b>	<b>DP-HFM2V</b> Viton®	<b>DP-HFM2E</b> EPDM	<b>DP-HFM2S</b> Silicone
<b>3"</b>	<b>DP-HFM3V</b> Viton®	<b>DP-HFM3E</b> EPDM	<b>DP-HFM3S</b> Silicone

Must specify Viton® (**product # and V**), EPDM (**product # and E**), or Silicone (**product # and S**) when ordering.

### Special Features

- / Easily serviced
- / Extended battery life with use of (2) 9V batteries
- / Fluid flow initiates measurement
- / Versatile plumbing configurations
- / Displays batch and total volume
- / Gallons / Liters flow rate measurement



**DURA PRODUCTS**  
Technology with Lasting Value

[www.DuraProducts.com](http://www.DuraProducts.com)  
Arcadia, IN 46030 | (317) 984-4003

**NEW  
FOR 2023**

# 2" HIGH-FLOW DURA-METER™



2" High-Flow  
Dura-Meter™



3" High-Flow  
Dura-Meter™

## 2" HIGH-FLOW AND 3" HIGH-FLOW COMPARISON

Specifications	2"	3"
Nominal Size	2"	3"
Model	DP-HFM2	DP-HFM3
Connection	M220 flange	M300 flange
Meter Accuracy	+/- 0.5%	+/- 0.5%
Non-conductive Fluids	Yes	Yes
Fluid Flow Initiates Measurement	Yes	Yes
Battery Size/Voltage	(2) 9 Volt	(2) 9 Volt
Battery Life Indicator	Yes	Yes
Backlit Display	Yes	Yes
Maximum Pressure	150 PSI	150 PSI
Minimum GPM	15	15
Maximum GPM	300	700
Minimum Temp	+ 32 °F	+ 32 °F
Maximum Temp	+ 140 °F	+ 140 °F
Meter Type/Style	Paddlewheel	Paddlewheel
Body Construction Material	GF Polypropylene	GF Polypropylene
Paddle Bearing Construction Material	Sapphire	Sapphire
Electrodes Construction Material	No	No
Straight Inlet *	7" *	7" *
Straight Outlet *	7" *	7" *
Field Calibration Capability *	Yes *	Yes *

\* Straight Inlet / Outlet Requirements are significantly reduced with Meter Calibration to achieve +/- 0.5% Accuracy



**DURA PRODUCTS**  
Technology with Lasting Value

www.DuraProducts.com  
Arcadia, IN 46030 | (317) 984-4003