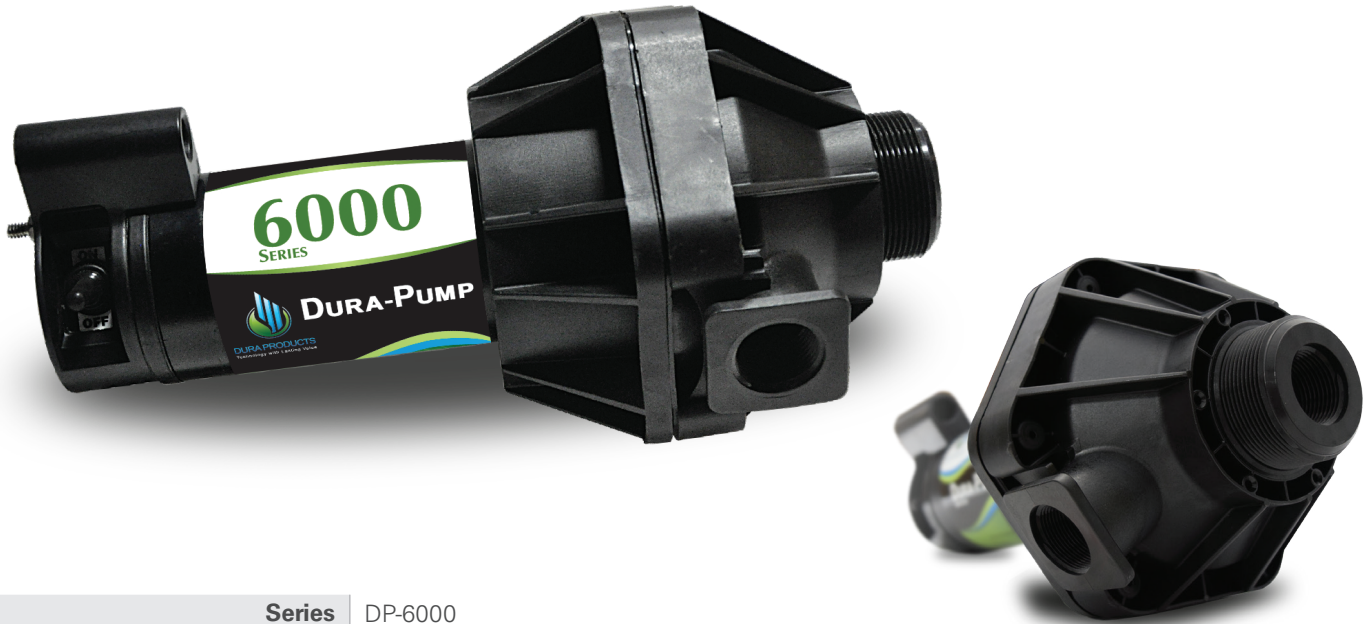


DURA-PUMP™

PRODUCT SPECIFICATIONS



Series	DP-6000
Check Valve	Internal; EPA 165.45 compliant
Vertical Suction Lift	Self-priming to 10ft
Pump Type	Self-priming, Positive Displacement Diaphragm pump
Chemically Resistant	Yes
Thermal Overload Protection	Yes
Run-Dry Capability	Yes
Internal Bypass	Yes
Run Time	30 Minute Duty Cycle
Operating Temp	-10°F to -130°F
Flow Rate	Max: 15GPM
Discharge Pressure	Max: 22psi
Motor Enclosure	Sealed
Suction Port	2" Male and 1" Female NPT thread
Discharge Port	1" Female NPT thread
Upper Housing	Glass-filled Polypropylene
Bottom Housing	Glass-filled Polypropylene
Diaphragm	Santoprene
Fluid	Non-flammable
Power Cord	12 Volt: 20ft, 6m; 110 Volt: 6.5ft, 2m
Wetted Material	Polypropylene; 304 Stainless Steel; Santoprene; EPDM, Silicone or Viton® Seals
12 Volt DC Motor	185 Watts 18.5 Amps; 30 Amp In-Line Fuse Copperplated Alligator Clips
110 Volt DC Motor	185 Watts 2.0 Amps; 3 Amp In-Line Fuse 3 Prong Grounded Plug
Motor HP	12 Volt: 1/4 HP; 110 Volt: 1/4 HP

- High-Flow with up to 15GPM flow rate
- Self-priming diaphragm pump with internal by-pass
- Motor thermally protected from overheating
- 30 minute duty cycle
- Suction ports has 2" Male NPT and 1" Female NPT
- Pump is easily field serviceable
- Features 2 Year Service Warranty Plan

DP-6018V-12 12 Volt Viton®	DP-6018V-110 110 Volt Viton®
DP-6018E-12 12 Volt EPDM	DP-6018E-110 110 Volt EPDM
DP-6018s-12 12 Volt Silicone	DP-6018S-110 110 Volt Silicone



DURA PRODUCTS
Technology with Lasting Value
www.DuraProducts.com
Arcadia, IN 46030 | (317) 984-4003