

# DURA-PUMP™

## PRODUCT SPECIFICATIONS



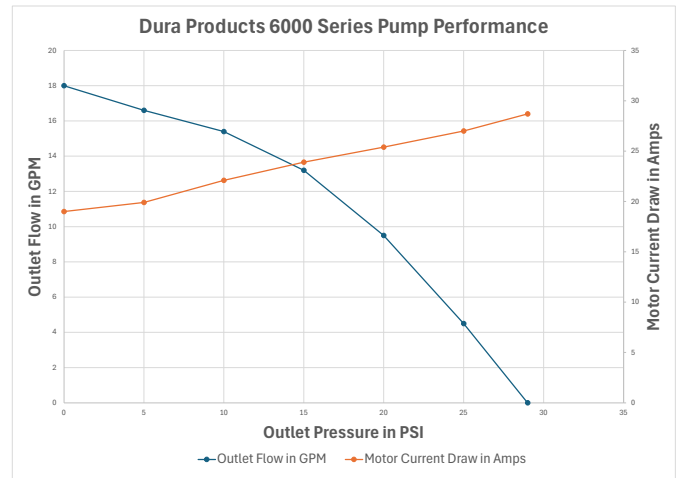
### FEATURES

- High-Flow with up to 18GPM flow rate
- Self-priming diaphragm pump with internal by-pass
- Motor thermally protected from overheating
- 30 minute duty cycle
- Suction ports has 2" Male NPT and 1" Female NPT
- Pump is easily field serviceable
- Features 2 Year Service Warranty Plan

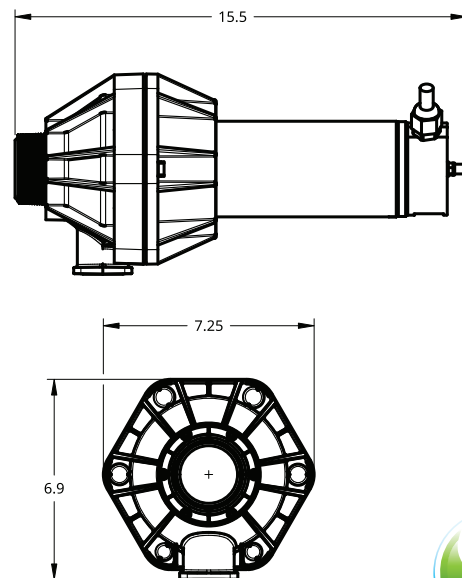
### TECHNICAL INFORMATION

<b>Series</b>	DP-6000
<b>Vertical Suction Lift</b>	Self-priming to 10ft
<b>Pump Type</b>	Self-priming, Positive Displacement Diaphragm pump
<b>Chemically Resistant</b>	Yes
<b>Thermal Overload Protection</b>	Yes
<b>Run-Dry Capability</b>	Yes
<b>Internal Bypass</b>	Yes
<b>Run Time</b>	30 Minute Duty Cycle
<b>Operating Temp</b>	-10°F to -130°F
<b>Flow Rate</b>	Max: 18GPM
<b>Discharge Pressure</b>	Max: 25psi
<b>Motor Enclosure</b>	Sealed
<b>Suction Port</b>	2" Male and 1" Female NPT thread
<b>Discharge Port</b>	1" Female NPT thread
<b>Upper Housing</b>	Glass-filled Polypropylene
<b>Bottom Housing</b>	Glass-filled Polypropylene
<b>Diaphragm</b>	Santoprene
<b>Fluid</b>	Non-flammable
<b>Power Cord</b>	12 Volt: 20ft, 6m; 110 Volt: 6.5ft, 2m
<b>Wetted Material</b>	Polypropylene; 304 Stainless Steel; Santoprene; EPDM, Silicone or Viton® Seals
<b>12 Volt DC Motor</b>	185 Watts 18.5 Amps; 30 Amp In-Line Fuse Copperplated Alligator Clips
<b>110 Volt DC Motor</b>	185 Watts 2.0 Amps; 3 Amp In-Line Fuse 3 Prong Grounded Plug
<b>Motor HP</b>	12 Volt: 1/4 HP; 110 Volt: 1/4 HP

### PUMP PERFORMANCE



### PUMP DIMENSIONS



**DURA PRODUCTS**  
Technology with Lasting Value  
[www.DuraProducts.com](http://www.DuraProducts.com)  
Arcadia, IN 46030 | (317) 984-4003