

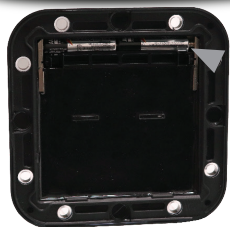
# DURA-METER™



ABS\_MeterManual\_050224

The meter will turn **ON** with any button press or when fluid passes through the meter. It will turn **OFF** when not in use.

Use buttons to navigate the four main menus; **Reset, Program, Calibration, Info.** The buttons correspond to the on screen indicators.



4-AAA batteries provide about 70 hours of use with the backlight turned **ON**, and about 300 hours with the backlight **OFF**.

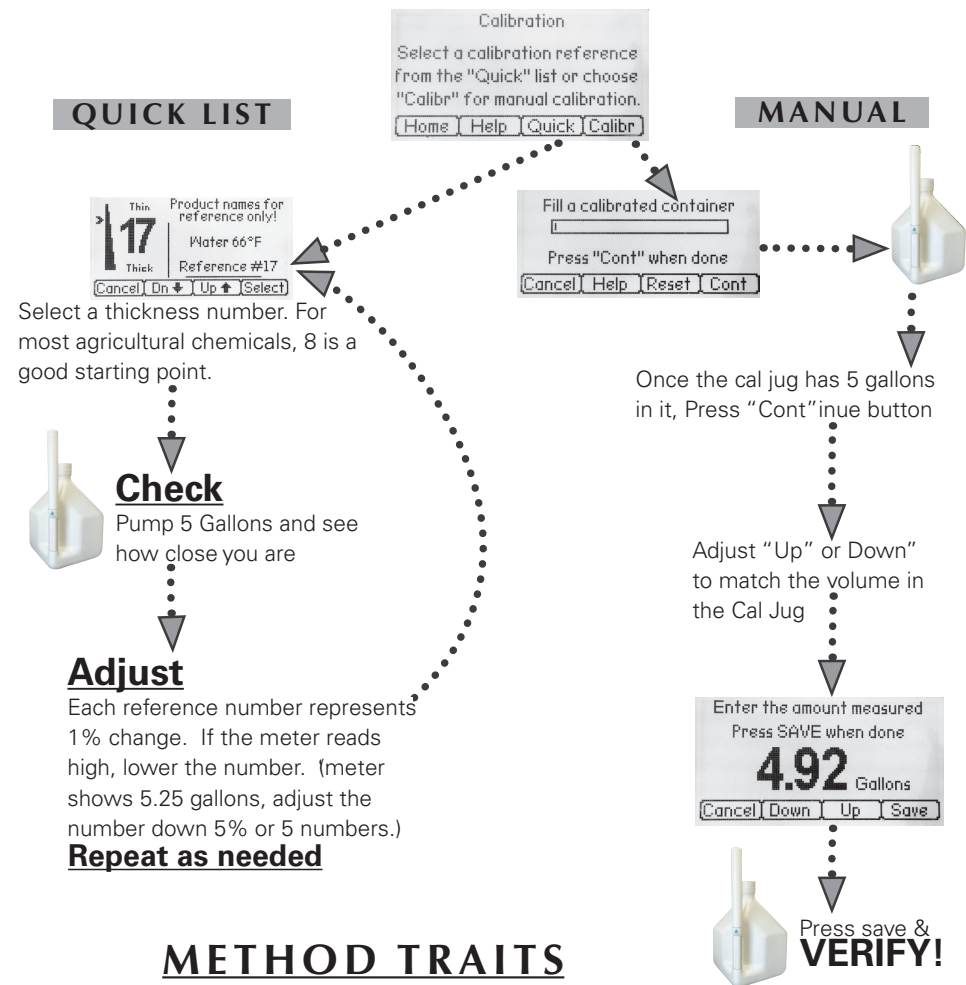


<b>Operating Temp</b>	-10°F to 130°F, -23°C to 54°C
<b>Flow Rate</b>	2 to 22GPM, 7.5 to 83LPM
<b>Meter Accuracy</b>	+/- .5%
<b>Backlit LCD Display</b>	Yes; with back-light timeout
<b>Max Pressure</b>	40 PSI
<b>Power Source</b>	4 "AAA" batteries; strength indicator
<b>Nutating Disc</b>	Yes
<b>Wetted Materials</b>	Polypropylene; 304 Stainless Steel; Ryton; EPDM, Viton® or Silicone seals
<b>Housing Chamber</b>	Polypropylene
<b>Moisture Sealed</b>	Yes; with sealed circuitry
<b>Amount Metered</b>	Yes
<b>Batch Count</b>	Yes
<b>Units Measured</b>	Gallons, Liters and Ounces
<b>Chemically Resistant</b>	Yes
<b>Calibration</b>	Quick List or Manual
<b>Dimensions</b>	5-1/4" W x 5-1/4" H x 4-1/4" D
<b>Weight</b>	1.5 lbs
<b>EPA Compliant</b>	Yes

TECHNICAL SPECIFICATIONS

## CALIBRATION

**NOTE:** Use a primed system. Verify your calibration. Fluid viscosity changes with temperature.



## METHOD TRAITS

### QUICK LIST

- Number is the same across any Dura-Meter, great for fleet use

### MANUAL

- Most accurate
- Usually only takes one attempt
- Adjustable to compensate for different measurement containers; 2.5-7 Gallon range



**DURA PRODUCTS**

Technology with Lasting Value

[www.DuraProducts.com](http://www.DuraProducts.com)

Arcadia, IN 46030 | (317) 984-4003

# DURA AUTO-BATCH™ EASY CADDY

Fast. Simple. Safe.™



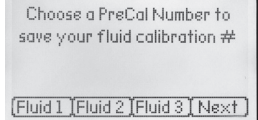
A check valve has been included to keep the system primed. **Accuracy depends on the system staying primed.**

## 5 SAVED CALIBRATIONS

This meter is equipped with the ability to save and recall five different manual calibrations. Always be aware of the cal factor or Fluid # being used and **VERIFY!**

### SAVING:

Manually calibrate. After pressing "Cont", you will be prompted to enter the fluid # where you want the calibration stored.



### RECALLING:

Hold down the "Cal" button. Select "PreCal" and then the Fluid #.



**NOTE: Use a primed system. Always verify your calibration. Fluid viscosity changes with temperature.**

<b>Operating Temp</b>	-10°F to 130°F, -23°C to 54°C
<b>Flow Rate</b>	2 to 22GPM, 7.5 to 83LPM
<b>Meter Accuracy</b>	+/- .5%
<b>Backlit LCD Display</b>	Yes; with back-light timeout
<b>Max Pressure</b>	40 PSI
<b>Power Source</b>	4 "AAA" batteries; strength indicator
<b>Nutating Disc</b>	Yes
<b>Wetted Materials</b>	Polypropylene; 304 Stainless Steel; Ryton; EPDM, Viton® or Silicone seals
<b>Housing Chamber</b>	Polypropylene
<b>Moisture Sealed</b>	Yes; with sealed circuitry
<b>Amount Metered</b>	Yes
<b>Batch Count</b>	Yes
<b>Units Measured</b>	Gallons, Liters and Ounces
<b>Chemically Resistant</b>	Yes
<b>Calibration</b>	Quick List or Manual
<b>Dimensions</b>	5-1/4" W x 5-1/4" H x 4-1/4" D
<b>Weight</b>	1.5 lbs
<b>EPA Compliant</b>	Yes

## TECHNICAL SPECIFICATIONS

## AUTO-BATCH OPERATION



- 1 Set Amount
- 2 Press start
- 3 The pump will begin to dispense fluid and automatically shuts off when complete.

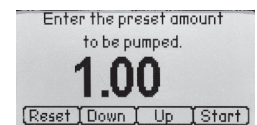
**NOTE:** The calibration setting that is used in Auto mode, is the last calibration the meter was assigned.

### PUMP SWITCH OPERATION



Pump switch must be in the ON position for Auto mode to work. Before switching to manual mode, place the pump switch in the OFF position. **Failure to do so, can result in unwanted product being dispensed.**

### VOLUME ADJUSTMENT



Use "Up" or "Down" buttons to change amount. Scroll speed increases the longer you hold the buttons. "Reset" defaults to 10Gal, 40L, & 128Oz.